

Management software of prints, copies and scans Secures accesses, increases mobility and reduces costs

By empowering the users and by reporting the activity of printing, Gespape detects good and bad practices and contributes to the development of a quantifiable environmental policy.



Key points

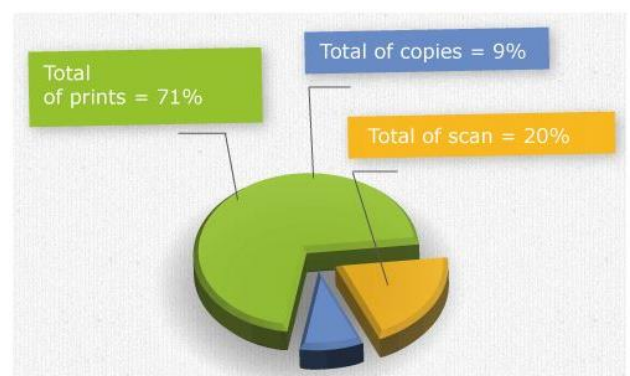
- Control the accesses and authorizations to the printers and MFPs.
- Set up a management of accounts with quotas or payment.
- Synchronization of the Gespape users with your own tools AD / LDAP / CSV data base.



General Cost Compatibility Access Right Jobs handling rules		
Current rules		
Rule type		Action to perform
If paper format is	mail	Enforce Duplex and Grayscale
If page number is greater than	100	Redirect to Trash
If page number is greater than	20	Suggest redirect to Reprography service
Delete		

- Set up a print policy (mandatory or suggested redirection and modification of documents).
- Recover its prints secured on remote sites.
- Get tools to a rigorous cost management.

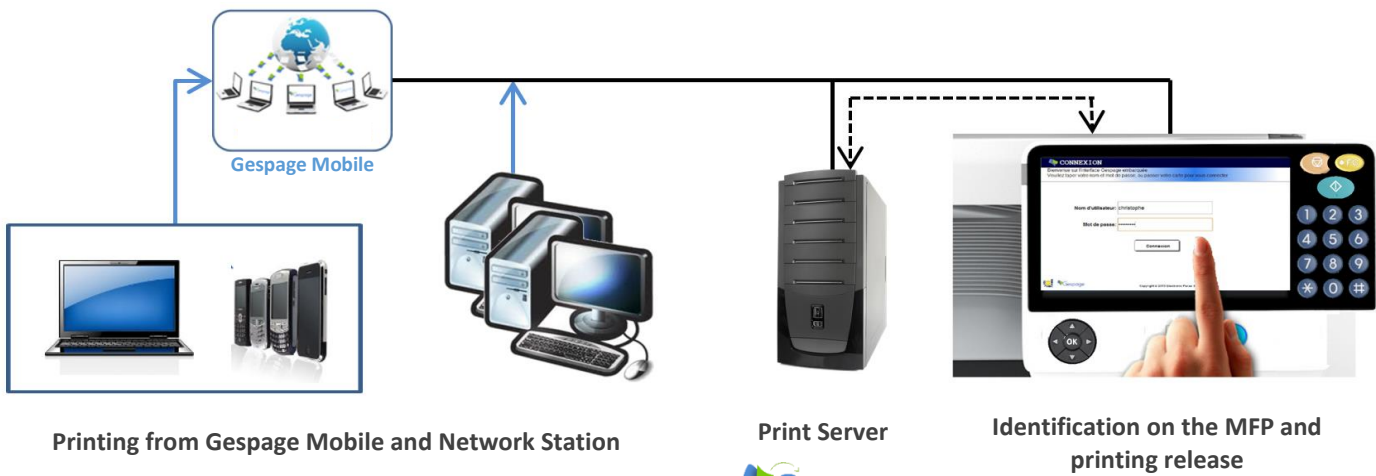
- Manage autonomous remote sites and consolidate all the print data accounting.
- Counters monitoring of Copiers and Printers (MPS).
- Optimize your production tools.
- Edit and build your own reports.



Architecture of the Solution

- Gespape solution is compatible with all Windows or Linux server operating systems.
- A Gespape server can monitor several print servers, including a mix of Windows and Linux servers (including remote, autonomous and separate networks).
- Gespape controls networked printers or MFPs as well as local printers (USB).
- Gespape «Remote» allows the remote sites to operate independently and consolidates data on a master site.
- The software and its pop-up are compatible with all types of stations: Windows, Linux/Unix, MAC and thin clients.
- The solution is managed from an ergonomic and secured web interface, taking into account the access rights.
- For more security, Gespape features an event log, automatic purges and backups and a High Availability system.

Example of configuration



Printing from Gespape Mobile and Network Station

Print Server

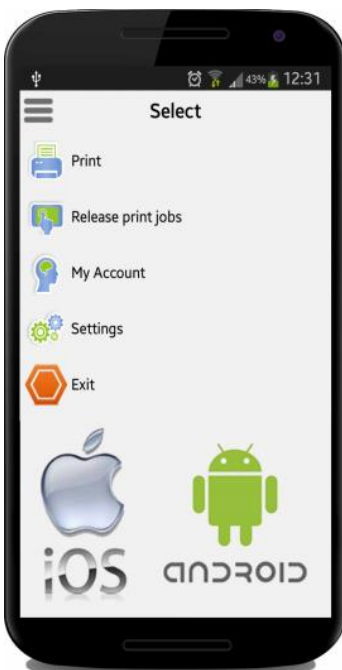
Identification on the MFP and printing release

The Optional Modules

Gespape Mobile



- Print submission from a WEB page or by email sending.
- Make the service accessible to all, all the time, from any equipment connected without print driver installation.

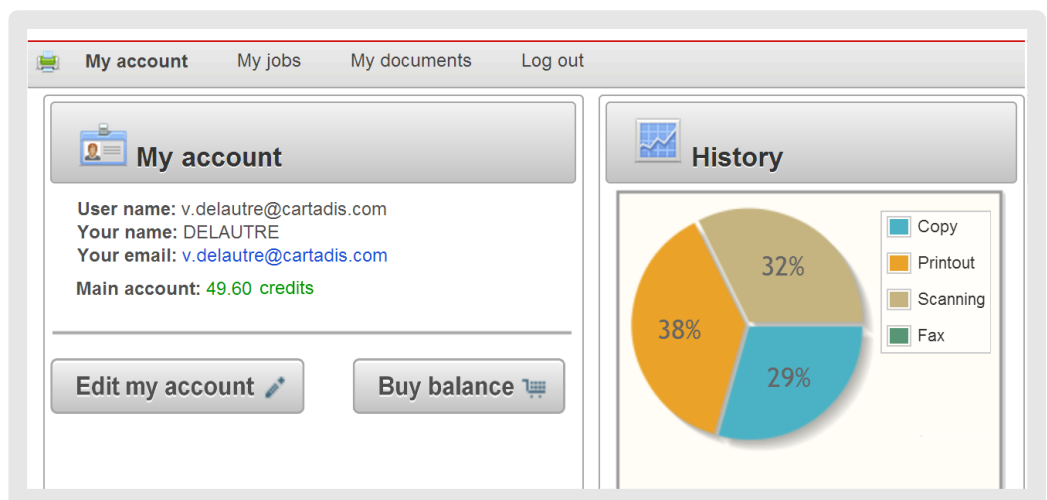


Interfacing with the Digital Environments of Work of the French Universities.

Web Payment



- Service for Gespape account reloading via a Web page.
- Propose to the customer an online shop open 24/24 and 7/7.
- Accept credit cards and online ways of payment without purchasing equipment.
- Less staff for commercial operations.



Strengths

Management of documents



- Accounting: A4 / A3 / B&W / colour / Scan to mail or files / USB to Print.
- Secure printing
 - **Print2me:** printing wherever you are on the network.
 - **Global Print2me:** printing wherever you are, on any network of your structure.
- Print rule:** redirection, compulsory or suggested, and modification of documents (Forcing to Black & White and Duplex).

Savings and ecology



- Edition of automatic and customizable reports, sent by mail, and data export in CSV.
- Valorization of savings in Euros as in ecological and energy resources.
- Monitoring of the fleet (detection of good and bad practices), configurable reports of costs per machine, user, department, date, time, size, toner monitoring and the fleet status.

Management of users

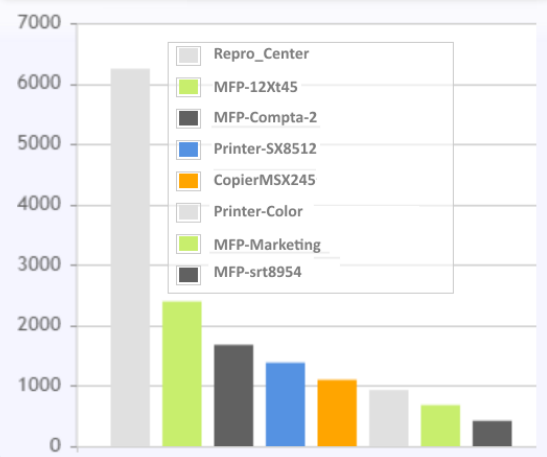


- Access control by code, contactless / magnetic cards.
- Management of quotas (by user, service, cross-cutting project) and automatic reloading.
- Managing of authorizations by user, service, project, document type: B & W / Colour / Size / Type.

General Cost Compatibility Access Right Jobs handling rules						
Groups						
<input type="checkbox"/>	Group	B&W Print	Colour Print	B&W Copy	Colour Copy	Scan
<input type="checkbox"/>	Advanced Email	<input checked="" type="checkbox"/>	<input type="checkbox"/>	<input checked="" type="checkbox"/>	<input type="checkbox"/>	<input checked="" type="checkbox"/>
<input type="checkbox"/>	All Users	<input checked="" type="checkbox"/>	<input checked="" type="checkbox"/>	<input checked="" type="checkbox"/>	<input checked="" type="checkbox"/>	<input checked="" type="checkbox"/>
<input type="checkbox"/>	ASP	<input checked="" type="checkbox"/>	<input checked="" type="checkbox"/>	<input checked="" type="checkbox"/>	<input checked="" type="checkbox"/>	<input checked="" type="checkbox"/>
<input type="checkbox"/>	Default	<input checked="" type="checkbox"/>	<input type="checkbox"/>	<input checked="" type="checkbox"/>	<input type="checkbox"/>	<input checked="" type="checkbox"/>

Add group Delete selection

Volume by printer



Benefits of the solution

For Corporates

- Increased security by access control and secure printing.
- Reduction of costs thanks to quotas, automatic purges of printing unreleased and uses optimization.
- Detailed reports on the activity of prints, copies and scans, automatically emailed.
- Help for following -up the invoicing of suppliers thanks to counters monitoring.
- Better productivity and mobility by decreasing wait times at the MFPs, reduction of support calls, and BYOD support through a Gespage Mobile interface.



For Education

- Quick and easy set up thanks to the automatic synchronization with the LDAP/AD directories enabling the automatic update of students' movements.
- Multi-network advanced management integrating the need to keep independent (administrative/educational) networks, with a single server, integration in the University ENT.
- Cost control by implementing quotas reloadable periodically, and a management control specifying the activities of each user.
- Loading of accounts by vending machines or bank payment gateway.



External terminals

To be efficient, a solution must rely on terminals of control in front of the points of print. With over 30 years of experience, CARTADIS has know-how and a multitude of terminals.

CARTADIS readers allow users to authenticate, release or remove their jobs queued to the printer of their choice and secure access to their documents.

There are CARTADIS terminals for all cases.



Embedded terminals

Fully integrated terminal in the multifunction touch screen. Available for the MFPs:



Vending machines

✓ DRC10 / CR10

The DRC10 and CR10 ensure creation, reload of accounts as well as the sale of contactless cards (DRC10), by coins and banknotes, for a fully autonomous operation.

✓ DRC9 / CR9

The DRC9 and CR9 ensure the sale (DRC9) and reload (DRC9/CR9) of the Cartadis cards, by coins and banknotes, for a fully autonomous operation.



Units available in wall or pedestal version (photo: ref. DRC10STD / CR10STD / DRC9STD / CR9STD).

External terminals



✓ TCMIRS

to use the Cartadis reloadable cards (or disposable with a payment station) and to ensure continuity of the magnetic cards already on a site.

cPad

a touch interface for printer without screen or embedded eTerminal (...).



Card readers



Contactless, Iso magnetic, CARTADIS offers optional card readers to be interfaced with the cards and badges already used.



Security and cost reduction are optimal.

CARTADIS

Zone des Marais – 1 Av., Louison Bobet 94120
Fontenay-sous-Bois – France

Tel. : (33) 01 48 77 40 60 – Fax : (33) 01 48 77 36 47

Mail : sales@cartadis.com

Web : www.gespage.com

Your Dealer